

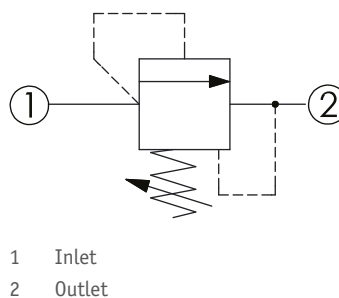
# CRD-162A - Relief valve

Direct acting, poppet

## 1 Available versions

Ordering example:

|          |           |                  |        |
|----------|-----------|------------------|--------|
| CRD-162A | -25       | -A               | -L     |
| Type     | Operation | Pressure setting | Option |



### Operation

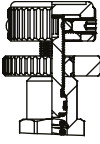
| Coding | Description                        |
|--------|------------------------------------|
| 25     | Direct acting port 1 to 2 (P to T) |

### Pressure setting

| Coding | Pressure (bar)   |                  |
|--------|------------------|------------------|
|        | Adjustment range | Standard setting |
| A      | 35 - 210         | 70               |
| B      | 20 - 105         | 70               |
| C      | 70 - 420         | 70               |
| D      | 14 - 55          | 28               |
| E      | 7 - 28           | 14               |
| S      | 3.5 - 14         | 7                |
| W      | 55 - 315         | 70               |

### Option

| Coding | Option  | Drawing |
|--------|---|---------|
| L      | Leakproof hex. socket screw   |         |
| LP     | Leakproof hex. socket screw, with stainless steel external metal components |         |

| Coding | Option                  | Drawing  |
|--------|-------------------------|--|
| K      | Handknob with lock knob |  |

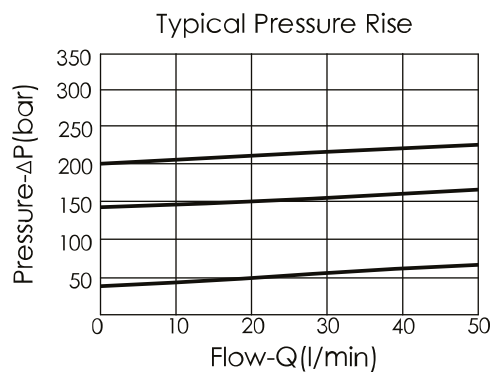
## 2 Technical data

|                              |  |
|------------------------------|--|
| Operating pressure $p_{max}$ | 350 bar  |
| Flow rate $Q_{max}$          | 45 l/min   |
| Installation torque          | 27 - 33 Nm   |
| Cavity                       | T-162A   |
| Weight                       | <ul style="list-style-type: none"> <li>▪ L, LP: 0.10 kg</li> <li>▪ K: 0.12 kg</li> </ul> |

### **i** INFORMATION

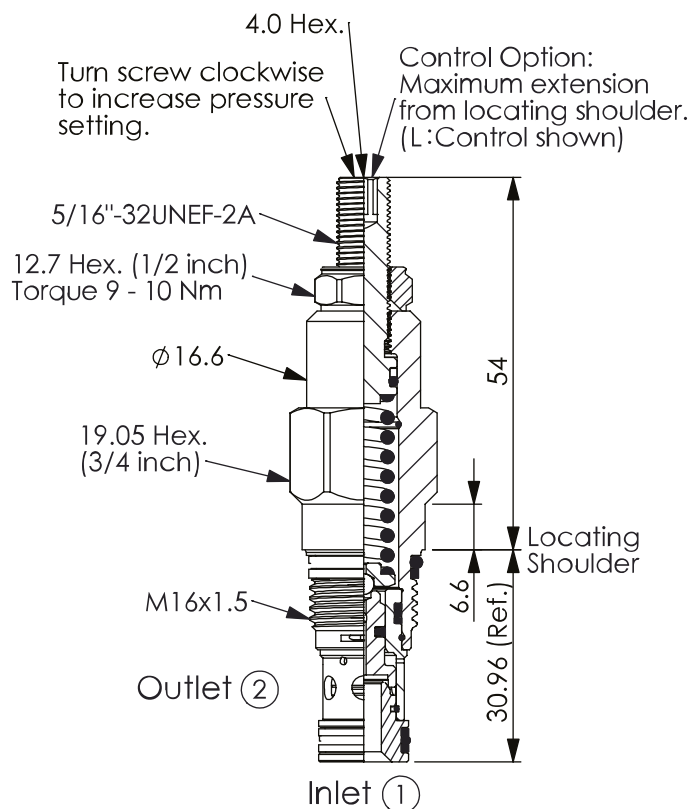
- Will accept maximum pressure at port **2**; suitable for use in cross port relief circuits.
- Response time-typical (2 ms)
- Maximum leakage approximately (5 drops/min to 85 % of nominal setting)
- Dirt tolerant
- The maximum adjustment of the screw is 6 turns. Please do not over-adjust to avoid damaging the internal components. (The maximum adjustment torque for the screw is 4 Nm)

### Characteristic lines



### 3 Dimensions

All dimensions in mm, subject to change.



### 4 Other information

see [Technical information HAWE cartridge valves: D 8219](#)

see [Recommendation for hydraulic fluid: D 5488/1](#)

